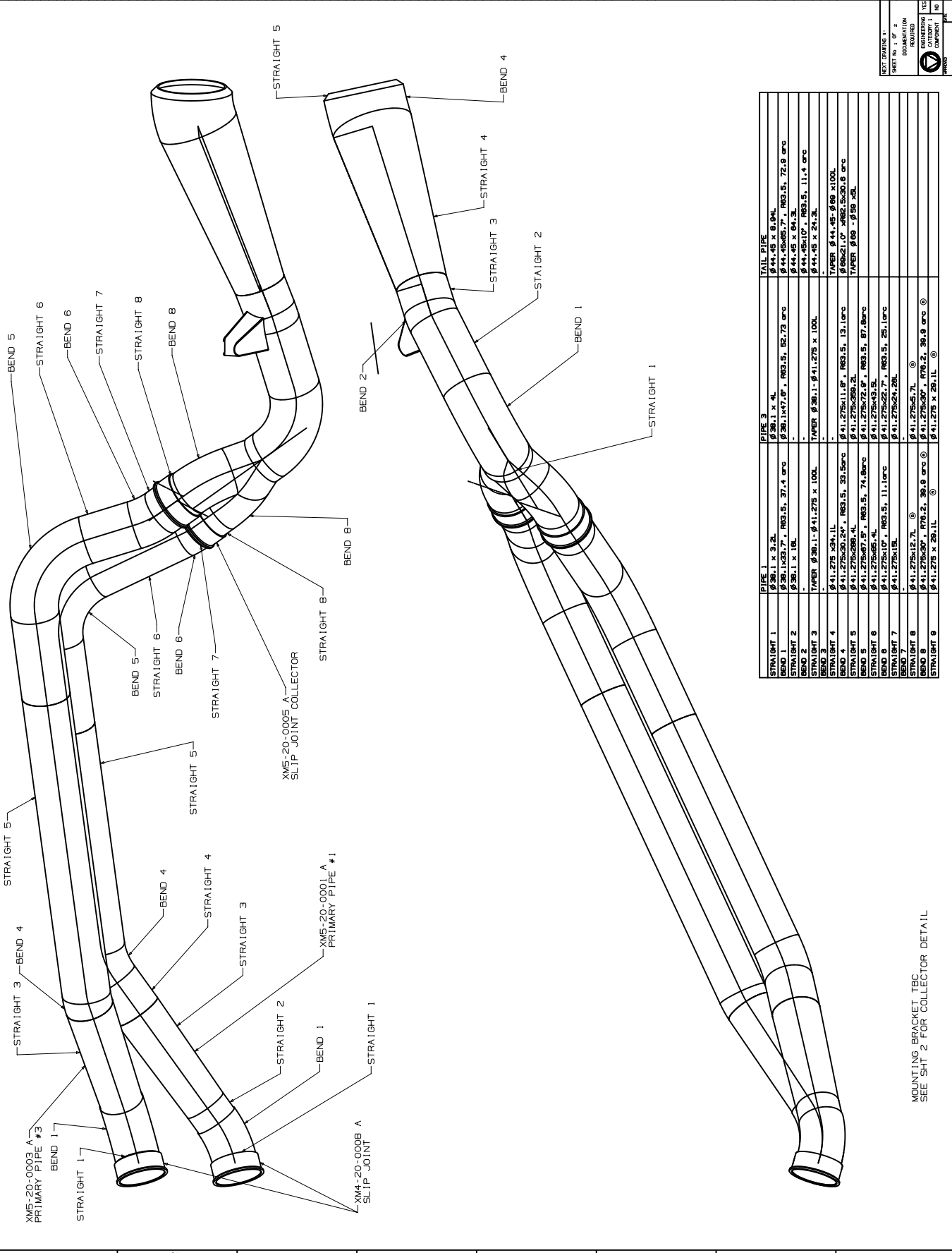


A B C D E F G H J K L

NO.	DESCRIPTION	DATE
1	RELEASE	XXX OF 21 LOS
2	REVISION	XXX OF 21 LOS
3	REVISION	XXX OF 21 LOS
4	REVISION	XXX OF 21 LOS
5	REVISION	XXX OF 21 LOS
6	REVISION	XXX OF 21 LOS
7	REVISION	XXX OF 21 LOS
8	REVISION	XXX OF 21 LOS
9	REVISION	XXX OF 21 LOS
10	REVISION	XXX OF 21 LOS
11	REVISION	XXX OF 21 LOS
12	REVISION	XXX OF 21 LOS
13	REVISION	XXX OF 21 LOS
14	REVISION	XXX OF 21 LOS
15	REVISION	XXX OF 21 LOS
16	REVISION	XXX OF 21 LOS
17	REVISION	XXX OF 21 LOS
18	REVISION	XXX OF 21 LOS
19	REVISION	XXX OF 21 LOS
20	REVISION	XXX OF 21 LOS
21	REVISION	XXX OF 21 LOS
22	REVISION	XXX OF 21 LOS
23	REVISION	XXX OF 21 LOS
24	REVISION	XXX OF 21 LOS
25	REVISION	XXX OF 21 LOS
26	REVISION	XXX OF 21 LOS
27	REVISION	XXX OF 21 LOS
28	REVISION	XXX OF 21 LOS
29	REVISION	XXX OF 21 LOS
30	REVISION	XXX OF 21 LOS
31	REVISION	XXX OF 21 LOS
32	REVISION	XXX OF 21 LOS
33	REVISION	XXX OF 21 LOS
34	REVISION	XXX OF 21 LOS
35	REVISION	XXX OF 21 LOS
36	REVISION	XXX OF 21 LOS
37	REVISION	XXX OF 21 LOS
38	REVISION	XXX OF 21 LOS
39	REVISION	XXX OF 21 LOS
40	REVISION	XXX OF 21 LOS
41	REVISION	XXX OF 21 LOS
42	REVISION	XXX OF 21 LOS
43	REVISION	XXX OF 21 LOS
44	REVISION	XXX OF 21 LOS
45	REVISION	XXX OF 21 LOS
46	REVISION	XXX OF 21 LOS
47	REVISION	XXX OF 21 LOS
48	REVISION	XXX OF 21 LOS
49	REVISION	XXX OF 21 LOS
50	REVISION	XXX OF 21 LOS



SECTION	PIPE 1	PIPE 2	PIPE 3	TAIL PIPE
STRAIGHT 1	Ø 36.1 x 3.2L	Ø 36.1 x 4L	Ø 36.1 x 4L	Ø 44.45 x 8.04L
BEND 1	Ø 36.1x37.7°, RØ3.5, 37.4 arc	Ø 36.1x47.6°, RØ3.5, 62.73 arc	Ø 36.1x47.6°, RØ3.5, 62.73 arc	Ø 44.45x65.7°, RØ3.5, 72.9 arc
STRAIGHT 2	Ø 36.1 x 18L	-	-	Ø 44.45 x 84.3L
BEND 2	-	-	-	Ø 44.45x107°, RØ3.5, 11.4 arc
STRAIGHT 3	TAPER Ø 36.1-Ø 41.275 x 100L	TAPER Ø 36.1-Ø 41.275 x 100L	TAPER Ø 36.1-Ø 41.275 x 100L	Ø 44.45 x 24.3L
STRAIGHT 4	Ø 41.275 x 34.1L	Ø 41.275 x 34.1L	Ø 41.275 x 34.1L	-
BEND 4	Ø 41.275x30.24°, RØ3.5, 33.5 arc	Ø 41.275x11.6°, RØ3.5, 13.1 arc	Ø 41.275x11.6°, RØ3.5, 13.1 arc	TAPER Ø 44.45-Ø 69 x 100L
STRAIGHT 5	Ø 41.275x286.4L	Ø 41.275x286.4L	Ø 41.275x286.4L	Ø 69x21.07° RØ2.5x30.0 arc
BEND 5	Ø 41.275x87.5°, RØ3.5, 74.8 arc	Ø 41.275x72.9°, RØ3.5, 87.8 arc	Ø 41.275x72.9°, RØ3.5, 87.8 arc	TAPER Ø 69-Ø 59 x 5L
STRAIGHT 6	Ø 41.275x65.4L	Ø 41.275x65.4L	Ø 41.275x65.4L	-
BEND 6	Ø 41.275x107°, RØ3.5, 11.1 arc	Ø 41.275x27.7°, RØ3.5, 25.1 arc	Ø 41.275x27.7°, RØ3.5, 25.1 arc	-
STRAIGHT 7	Ø 41.275x18L	Ø 41.275x18L	Ø 41.275x18L	-
BEND 7	Ø 41.275x13.7L	Ø 41.275x13.7L	Ø 41.275x13.7L	-
BEND 8	Ø 41.275x30°, RØ3.5, 30.9 arc	Ø 41.275x30°, RØ3.5, 30.9 arc	Ø 41.275x30°, RØ3.5, 30.9 arc	-
STRAIGHT 8	Ø 41.275 x 29.1L	Ø 41.275 x 29.1L	Ø 41.275 x 29.1L	-

MOUNTING BRACKET TEC  
SEE SHIT 2 FOR COLLECTOR DETAIL

**TEAM ROBERTS**

LAYOUT REAR EXHAUST SYSTEM  
 SHEET NO. 1 OF 2  
 DRAWN BY: C. F. FRIESTER  
 DATE: 02/21/08  
 PROJECT: TITANIUM GRADE 2  
 SCALE: 1:100  
 IF IN DOUBT ASK  
 THIRD ANGLE DO NOT PROJECTION SCALE

XMS-20-9002  
 CATEGORY 1  
 COMPONENT 10